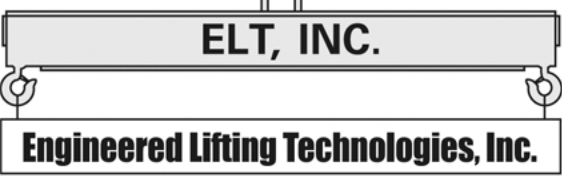
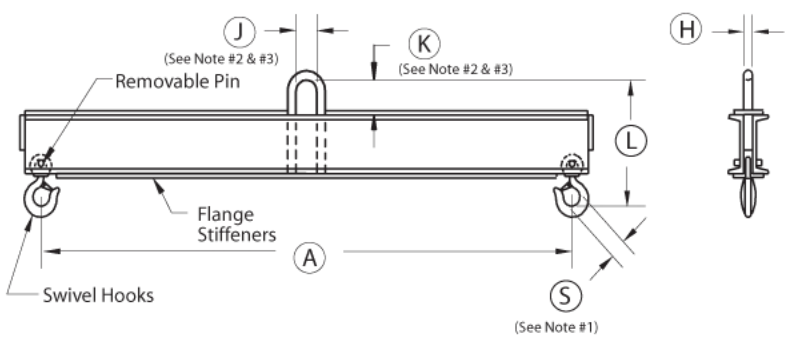


Quotation Needed By: _____
 Date: _____ Contact: _____
 Company Name: _____
 Address: _____
 City: _____ State: _____ Zip: _____
 Phone: _____ Fax: _____
 E-mail: _____



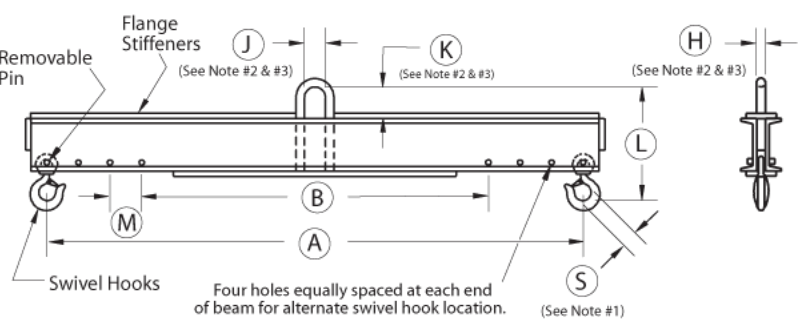
Engineered Lifting Technologies, Inc.
 PHONE: 888.358.5438 • FAX: 716.667.6837
 EMAIL: INFO@ELTLIFT.COM
 WWW.ELTLIFT.COM

CUSTOM LIFTING BEAMS



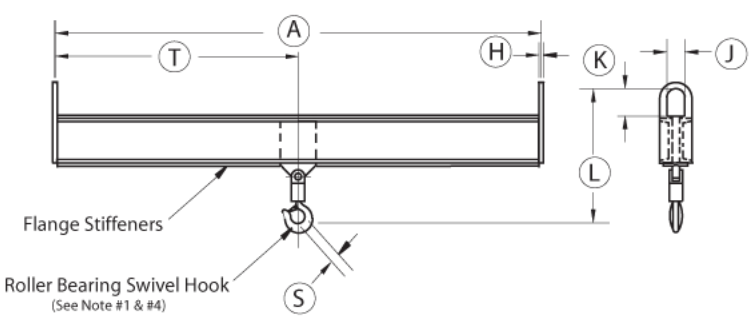
Model FHB
 FIXED HOOK BEAM

An ideal solution for lifting loads where headroom is critical.



Model AHB
 ADJUSTABLE HOOK BEAM

An ideal solution for lifting off center loads or carrying load lengths where headroom is critical.



Model TBB
 TWIN BAIL BEAM

An ideal solution for utilizing two lifting hoists to increase lifting capacity.

- MODEL FHB
- MODEL AHB
- MODEL TBB

CAPACITY _____ LBS.

- (A) _____ MAX. DIST. BETWEEN HOOKS
- (B) _____ MIN. DIST. BETWEEN HOOKS
- * (H) _____ BAIL THICKNESS
- * (J) _____ BAIL WIDTH
- * (K) _____ BAIL HEIGHT
- * (L) _____ TOTAL HEIGHT
- (M) _____ HOOK SPACE
- * (S) _____ MAXIMUM STOCK DIA.
- * (T) _____ DISTANCE TO HOOK

*** OPTIONAL DATA**

- Notes:**
1. Maximum stock diameter refers to the size of the material that will fit into the swivel hook opening.
 2. All loads must be centered under the lifting bail.
 3. Please verify that the lifting bail size will suit the crane hook.
 4. Standard swivel hook optional.

Additional Information:
(Load dimensions & properties)
