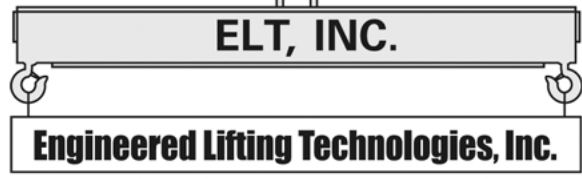
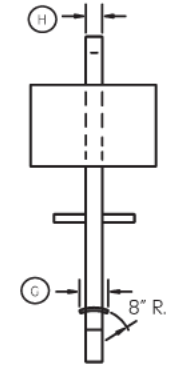
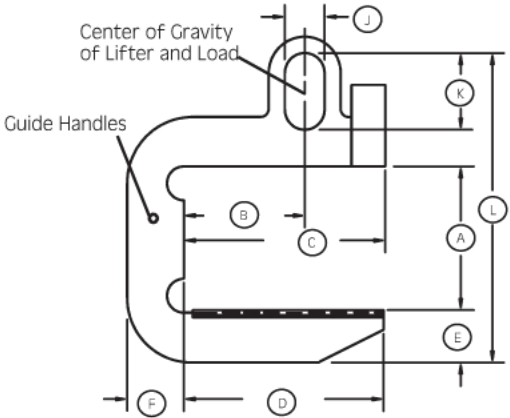


Quotation Needed By: \_\_\_\_\_  
 Date: \_\_\_\_\_ Contact: \_\_\_\_\_  
 Company Name: \_\_\_\_\_  
 Address: \_\_\_\_\_  
 City: \_\_\_\_\_ State: \_\_\_\_\_ Zip: \_\_\_\_\_  
 Phone: \_\_\_\_\_ Fax: \_\_\_\_\_  
 Email: \_\_\_\_\_



**Engineered Lifting Technologies, Inc.**  
 PHONE: 888.358.5438 • FAX: 716.667.6837  
 EMAIL: INFO@ELTLIFT.COM  
 WWW.ELTLIFT.COM

# CUSTOM PLATE STYLE C-HOOKS



- MODEL CSC
- MODEL LCC
- MODEL SCC

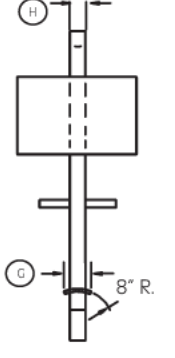
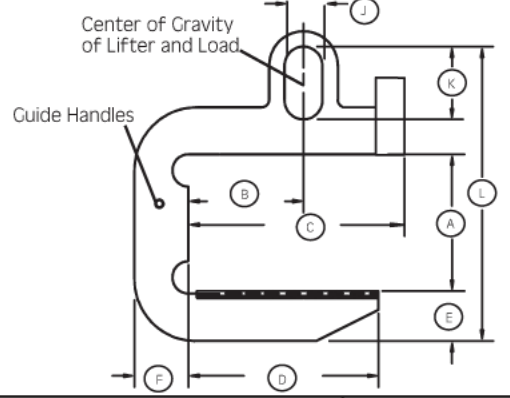
CAPACITY \_\_\_\_\_ LBS.

- (A) \_\_\_\_\_ VERTICAL CLEARANCE
- (B) \_\_\_\_\_ 1/2 OF MAX. COIL WIDTH
- (C) \_\_\_\_\_ UPPER ARM LENGTH
- (D) \_\_\_\_\_ LIFT ARM LENGTH
- (E) \_\_\_\_\_ LIFT ARM DEPTH
- \* (F) \_\_\_\_\_ VERTICAL POST DEPTH
- (G) \_\_\_\_\_ LIFT ARM WIDTH
- \* (H) \_\_\_\_\_ BAIL THICKNESS
- (J) \_\_\_\_\_ BAIL WIDTH
- \* (K) \_\_\_\_\_ BAIL HEIGHT
- \* (L) \_\_\_\_\_ TOTAL HEIGHT

## MODEL CSC

CLOSE STACKING C-HOOK

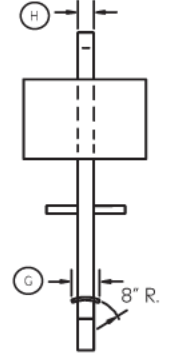
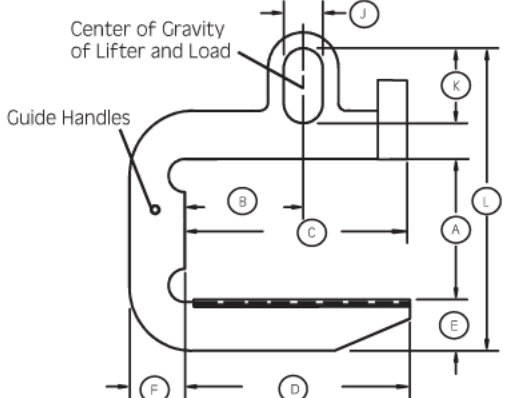
A shorter upper arm for handling coils flush against a vertical surface.



## MODEL LCC

LOW COST C-HOOK

A longer upper arm reduces counterweight for a lighter weight lifter.



## MODEL SCC

SLIT COIL C-HOOK

A longer lift arm allows handling of multiple coils banded together.

### \* OPTIONAL DATA

- Notes:**
1. Lifting arm length allows minimum coil width to be handled without protrusion of lift arm past edge of coil.
  2. All loads must be centered under the lifting bail.
  3. Please verify that the lifting bail size will suit crane hook.

**Additional Information:**  
 (Load dimensions & properties)

\_\_\_\_\_  
 \_\_\_\_\_  
 \_\_\_\_\_

PLEASE NOTE: WEIGHT AND DIMENSIONS CAN VARY AND ARE APPROXIMATE AND REFERENCE ONLY. SPECIFIC WEIGHT CAN NOT BE DETERMINED UNTIL THE UNIT IS FABRICATED.