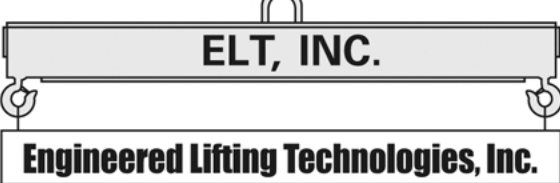


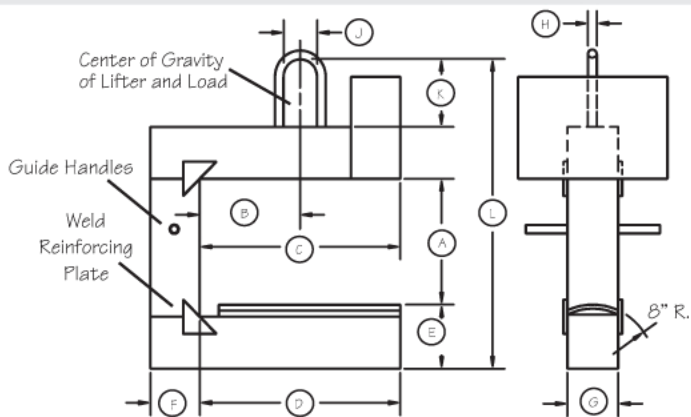
Quotation Needed By: \_\_\_\_\_  
 Date: \_\_\_\_\_ Contact: \_\_\_\_\_  
 Company Name: \_\_\_\_\_  
 Address: \_\_\_\_\_  
 City: \_\_\_\_\_ State: \_\_\_\_\_ Zip: \_\_\_\_\_  
 Phone: \_\_\_\_\_ Fax: \_\_\_\_\_  
 Email: \_\_\_\_\_



**Engineered Lifting Technologies, Inc.**

PHONE: 888.358.5438 • FAX: 716.667.6837  
 EMAIL: INFO@ELTLIFT.COM  
 WWW.ELTLIFT.COM

# CUSTOM TUBULAR STYLE C-HOOKS



- MODEL TCF
- MODEL TLC
- MODEL TCS

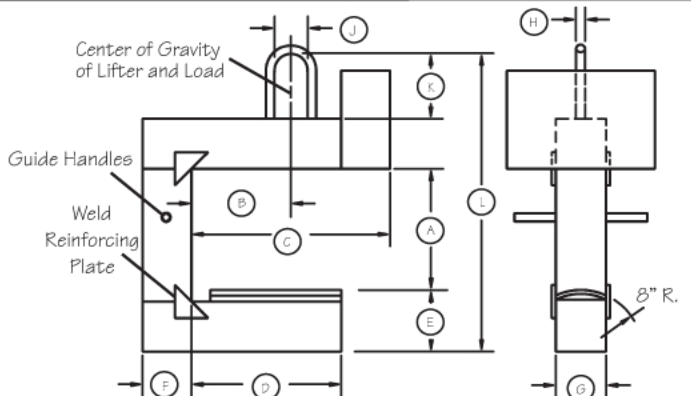
CAPACITY \_\_\_\_\_ LBS.

- (A) \_\_\_\_\_ VERTICAL CLEARANCE
- (B) \_\_\_\_\_ 1/2 OF MAX. COIL WIDTH
- (C) \_\_\_\_\_ UPPER ARM LENGTH
- (D) \_\_\_\_\_ LIFT ARM LENGTH
- (E) \_\_\_\_\_ LIFT ARM DEPTH
- \* (F) \_\_\_\_\_ VERTICAL POST DEPTH
- (G) \_\_\_\_\_ LIFT ARM WIDTH
- \* (H) \_\_\_\_\_ BAIL THICKNESS
- (J) \_\_\_\_\_ BAIL WIDTH
- (K) \_\_\_\_\_ BAIL HEIGHT
- \* (L) \_\_\_\_\_ TOTAL HEIGHT

## MODEL TCS

CLOSE STACKING C-HOOK

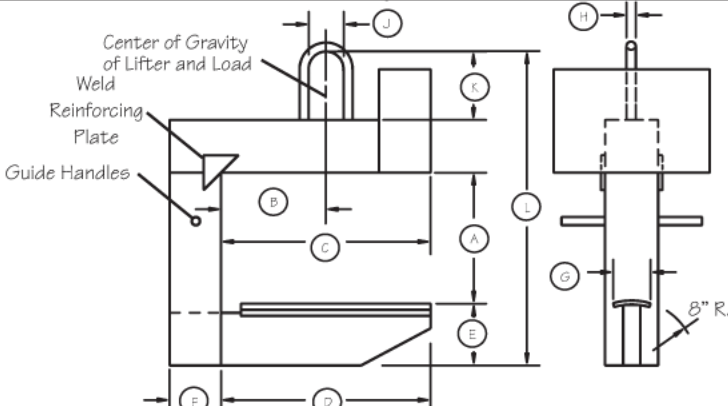
A shorter upper arm for handling coils flush against a vertical surface.



## MODEL TLC

LOW COST C-HOOK

A longer upper arm reduces counterweight for a lighter weight lifter.



## MODEL TCF

CLOSE STACKING W/FLAME CUT LIFT ARM

The flame cut lift arm allows for movement into confined areas.

### \* OPTIONAL DATA

- Notes:**
1. Lifting arm length allows minimum coil width to be handled without protrusion of lift arm past edge of coil.
  2. All loads must be centered under the lifting bail.
  3. Please verify that the lifting bail size will suit crane hook.

### Additional Information:

(Load dimensions & properties)

\_\_\_\_\_  
 \_\_\_\_\_  
 \_\_\_\_\_

PLEASE NOTE: WEIGHT AND DIMENSIONS CAN VARY AND ARE APPROXIMATE AND REFERENCE ONLY. SPECIFIC WEIGHT CAN NOT BE DETERMINED UNTIL THE UNIT IS FABRICATED.