

Model SCC

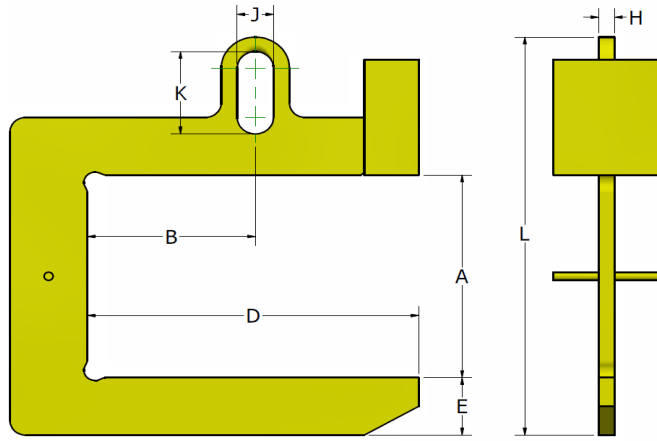
Slit Coil C-Hooks

-The Slit Coil C-Hook has a longer lift arm allowing the unit to carry multiple coils equal in size to the maximum coil width.

-Integrated lifting bail saves headroom and minimizes inspection normally associated with welded lifting bails.

-High strength alloy steel reduces the physical size of the lift arm allowing movement into confined areas for direct crane loading and unloading.

-All lifters are proof tested exceeding ANSI/ASME B30.20 standards and a test certificate is issued. Also painted safety yellow and clearly marked on both sides with rated capacity to conform to OSHA standards.



Capacity	Coil Width		Vertical Clearance	Distance to C.O.G.	Lift Arm Length	Lift Arm Depth	Bail Size			Total Height	Approx. Unit Weight	Model Number	
	Max.	Min.					A	B	D				E
Pounds	Inches											Pounds	
10000	36	24	16	18	36	5 3/4	1 1/2	x 4 x	10	39 3/4	393	SCC - 10 - 36 - 24 - 16	
			24				1 1/2	x 4 x	10	44 5/8	450	SCC - 10 - 36 - 24 - 24	
	48	30	16	24	48	6 1/2	1 1/2	x 4 x	10	38	507	SCC - 10 - 48 - 30 - 16	
			24				1 1/2	x 4 x	10	46	567	SCC - 10 - 48 - 30 - 24	
	60	36	16	30	60	7	1 1/2	x 4 x	10	39	616	SCC - 10 - 60 - 36 - 16	
			24				1 1/2	x 4 x	10	47	678	SCC - 10 - 60 - 36 - 24	
20000	36	24	24	18	36	7 1/2	1 3/4	x 4 x	10	48 3/8	709	SCC - 20 - 36 - 24 - 24	
			30				1 3/4	x 4 x	10	54 3/8	773	SCC - 20 - 36 - 24 - 30	
	48	30	24	24	48	8 1/2	1 3/4	x 4 x	10	50 3/8	896	SCC - 20 - 48 - 30 - 24	
			30				1 3/4	x 4 x	10	56 3/8	964	SCC - 20 - 48 - 30 - 30	
	60	36	16	30	60	9 1/8	1 3/4	x 4 x	10	43 7/8	987	SCC - 20 - 60 - 36 - 16	
			24				1 3/4	x 4 x	10	51 7/8	1082	SCC - 20 - 60 - 36 - 24	
	72	42	16	36	72	10	1 3/4	x 4 x	10	45 5/8	1192	SCC - 20 - 72 - 42 - 16	
			24				1 3/4	x 4 x	10	53 3/8	1291	SCC - 20 - 72 - 42 - 24	
	30000	48	30	24	24	48	9 3/4	2	x 6 x	14	56 1/8	1210	SCC - 30 - 48 - 30 - 24
				30				2	x 6 x	14	62 1/8	1299	SCC - 30 - 48 - 30 - 30
60		36	24	30	60	10 3/4	2	x 6 x	14	58 1/8	1481	SCC - 30 - 60 - 36 - 24	
			30				2	x 6 x	14	64 1/8	1575	SCC - 30 - 60 - 36 - 30	
72		42	24	36	72	11 1/2	2	x 6 x	14	59 5/8	1742	SCC - 30 - 72 - 42 - 24	
			30				2	x 6 x	14	65 5/8	1840	SCC - 30 - 72 - 42 - 30	
40000	48	30	30	24	48	10 5/8	2 1/4	x 6 x	14	64 1/8	1607	SCC - 40 - 48 - 30 - 30	
			36				2 1/4	x 6 x	14	70 1/8	1714	SCC - 40 - 48 - 30 - 36	
	60	36	24	30	60	11 1/4	2 1/4	x 6 x	14	60 5/8	1864	SCC - 40 - 60 - 36 - 24	
			30				2 1/4	x 6 x	14	66 5/8	1980	SCC - 40 - 60 - 36 - 30	
	72	42	24	36	72	12 1/4	2 1/4	x 6 x	14	62 1/8	2174	SCC - 40 - 72 - 42 - 24	
			30				2 1/4	x 6 x	14	68 1/8	2293	SCC - 40 - 72 - 42 - 30	
50000	48	30	30	24	48	10 3/4	2 1/4	x 6 x	18	69 7/8	1962	SCC - 50 - 48 - 30 - 30	
			36				2 1/4	x 6 x	18	75 7/8	2128	SCC - 50 - 48 - 30 - 36	
	60	36	28	30	60	11 7/8	2 1/4	x 6 x	18	69 7/8	2315	SCC - 50 - 60 - 36 - 28	
			34				2 1/4	x 6 x	18	75 7/8	2452	SCC - 50 - 60 - 36 - 34	
	72	42	24	36	72	13	2 1/4	x 6 x	18	67 7/8	2633	SCC - 50 - 72 - 42 - 24	
			32				2 1/4	x 6 x	18	75 7/8	2824	SCC - 50 - 72 - 42 - 32	
60000	60	36	28	30	60	13	2 1/4	x 6 x	18	73 1/8	2681	SCC - 60 - 60 - 36 - 28	
			34				2 1/4	x 6 x	18	79 1/8	2835	SCC - 60 - 60 - 36 - 34	
	72	42	28	36	72	14 1/8	2 1/4	x 6 x	18	75 1/8	3123	SCC - 60 - 72 - 42 - 28	
			34				2 1/4	x 6 x	18	81 1/8	3283	SCC - 60 - 72 - 42 - 34	
80000	72	42	38	36	72	14 7/8	3	x 6 x	18	86 7/8	3991	SCC - 80 - 72 - 42 - 38	
			44				3	x 6 x	18	92 7/8	4531	SCC - 80 - 72 - 42 - 44	
100000	84	46	38	42	84	16 1/4	4	x 6 x	18	88 3/8	6351	SCC - 100 - 84 - 46 - 38	
			44				4	x 6 x	18	95 3/8	6623	SCC - 100 - 84 - 46 - 44	

- Notes:
- Lifter arm length allows multiple coil widths to be handled, one at a time, but not to exceed the max coil width.
 - All loads must be centered under lifting bail.
 - Please verify that the lifting bail size will suit the crane hook.
 - Other capacities and load lengths available upon request.

PLEASE NOTE: WEIGHT AND DIMENSIONS CAN VARY AND ARE APPROXIMATE AND FOR REFERENCE ONLY. SPECIFIC WEIGHT CAN NOT BE DETERMINED UNTIL THE UNIT IS FABRICATED.



PHONE 855.800.9568 - FAX 716-667-6837

EMAIL: webinfo@eltlift.com

WEB: www.eltlift.com